

CONDOR M-12 and BX-12



QUALITY AND DURABILITY IN EACH COMPONENT



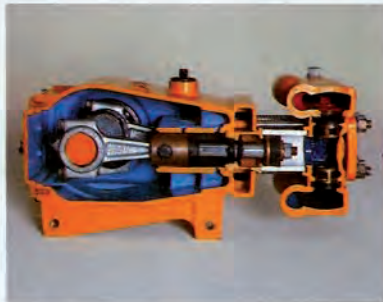
CONDOR M-12 and BX-12

DESIGNED FOR UNIFORM SPRAYING,
WITH HIGH OPERATIONAL PERFORMANCE
AND LOW MAINTENANCE COST



TANK

Made of high density polyethylene. Resistant to corrosive action of chemicals. Capacity of 600 liters (160 gal).



PUMP JP-75

With capacity of 75 l/min (20 gpm), 3 pistons, ceramic (alumina) cylinders. For works up to 400 psi. Simple, durable and of low maintenance cost.



CONTROL VALVE

Modern and practical, can be easily reached by the operator. Pressure regulator with quick relief avoids overloading the spray circuit. Provides precise regulations.



FACILITATES TRANSPORTATION
THROUGHOUT THE FIELD
AND UNDER LOW SPACES.

SPECIFICATIONS	CONDOR M-12	CONDOR BX-12	SPECIFICATIONS	CONDOR M-12	CONDOR BX-12	
Tank	600 liters (160 gal)	600 liters (160 gal)	Machine width with booms	1.25 m (4' 1")	2.50 m (8' 2")	
Pump	JP-75	JP-75	Nozzles	Number	24	
Pumping capacity	75 l/min (20 gpm) at 540 rpm	75 l/min (20 gpm) at 540 rpm		Type	Cone JA-2	Cone JD-12 P
Filler unit	EJ-250	EJ-250		Spacing	0.50 m (20")	0.50 m (20")
Filling flow rate	250 l/min (66 gpm)	250 l/min (66 gpm)	Booms	Length	11.5 m (37' 9")	
Boom height	3.30 m (10' 9")	2.15 m (7')		Raising	By winches	Manual



Rua Dr. Luiz Miranda, 1650 - 17580-000 - Pompéia - SP - Brazil

Tel.: +55 14 3405 2100 - Fax: +55 14 3452 1306

E-mail: export@jacto.com.br

www.jacto.com.br

Jacto reserves the right to introduce modifications to its products without prior notice.